



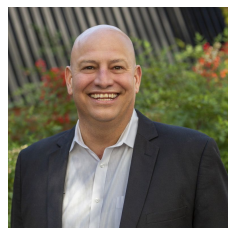
24 Liepin Close Andrews Farm SA

4 2 2

Anthony Fonovic & Tim Morris Real Estate are excited to present this quality 4 bedroom home offering plenty of space & versatility for any first home buyer looking to get their foot in the door of the ever-increasing property market, a growing family looking for that extra space to spread out & live in comfort, or the savvy investor looking to commence building or further growing their property investment portfolio.

This spacious home offers an open plan casual living that includes a large kitchen with ample bench & storage space including a triple pantry, gas cooking & electric oven with a separate grill for added cooking functionality. The kitchen conveniently overlooks the dining & living areas as well as the patio. The casual living area also adjoins a separate formal lounge or 2nd living space.

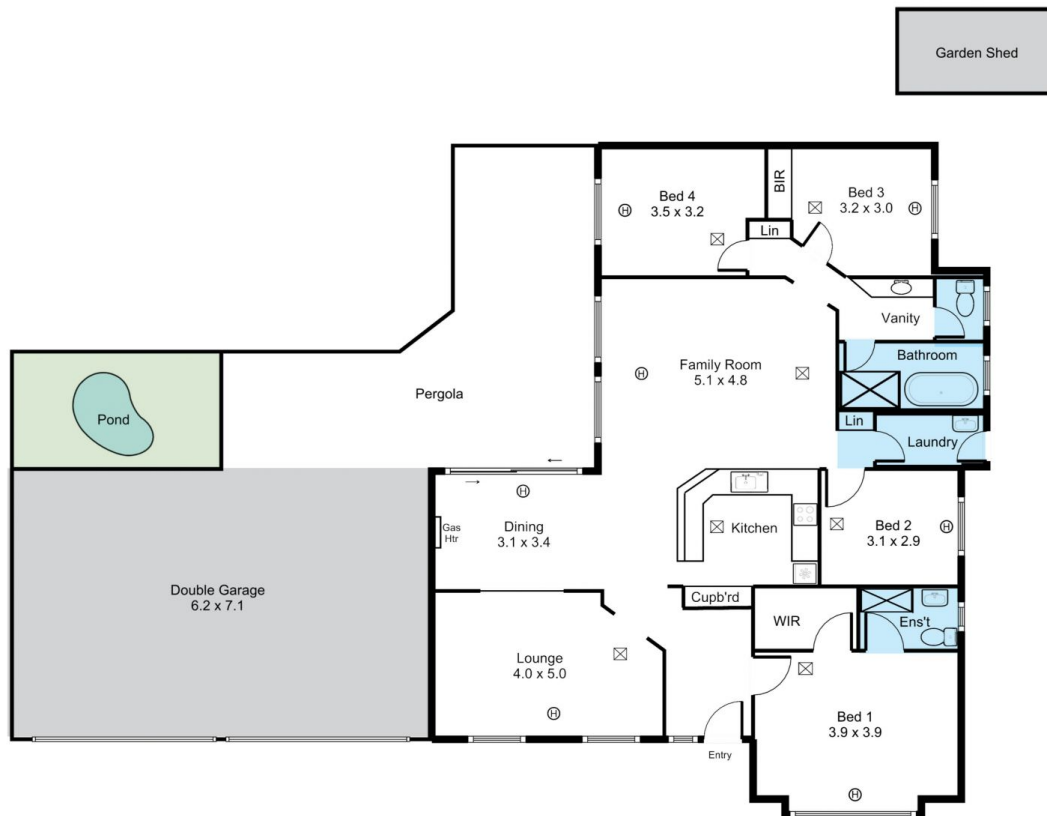
Price : \$ 362,000
Building Size : 170 sqm
Land Size : 587 sqm
View : <https://www.timmorris.com.au/5922171>



Anthony Fonovic
08 7225 2525



Tim Morris
08 7225 2525



Approx. Living 220m² - Land 587m²

This drawing is for illustration purposes only. All measurements are approximate only and information to be relied upon should be independently verified.