



95 Wattlebird Drive Burton SA

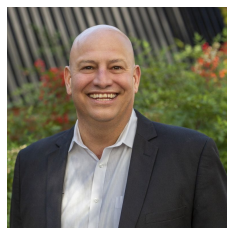
3 2 1

Anthony Fonovic & Tim Morris Real Estate are excited to present 95 Wattlebird Drive Burton offering the perfect opportunity for the 1st home buyer to get a foot in the door with an entry into the property market, the growing family looking for space to spread their wings in comfort or for the astute investor to increase their property portfolio.

This fresh, crisp and clean home offers a modern design with the 3 bedrooms situated at the front of the home, the master suite boasting an ensuite and walk-in-robe for a private retreat away from the rest of the home and bedrooms 2 and 3 have simple access to the main bathroom just across the hall.

Down to the rear of the home you'll find a great open plan kitchen, dining and living area. The kitchen overlooking the

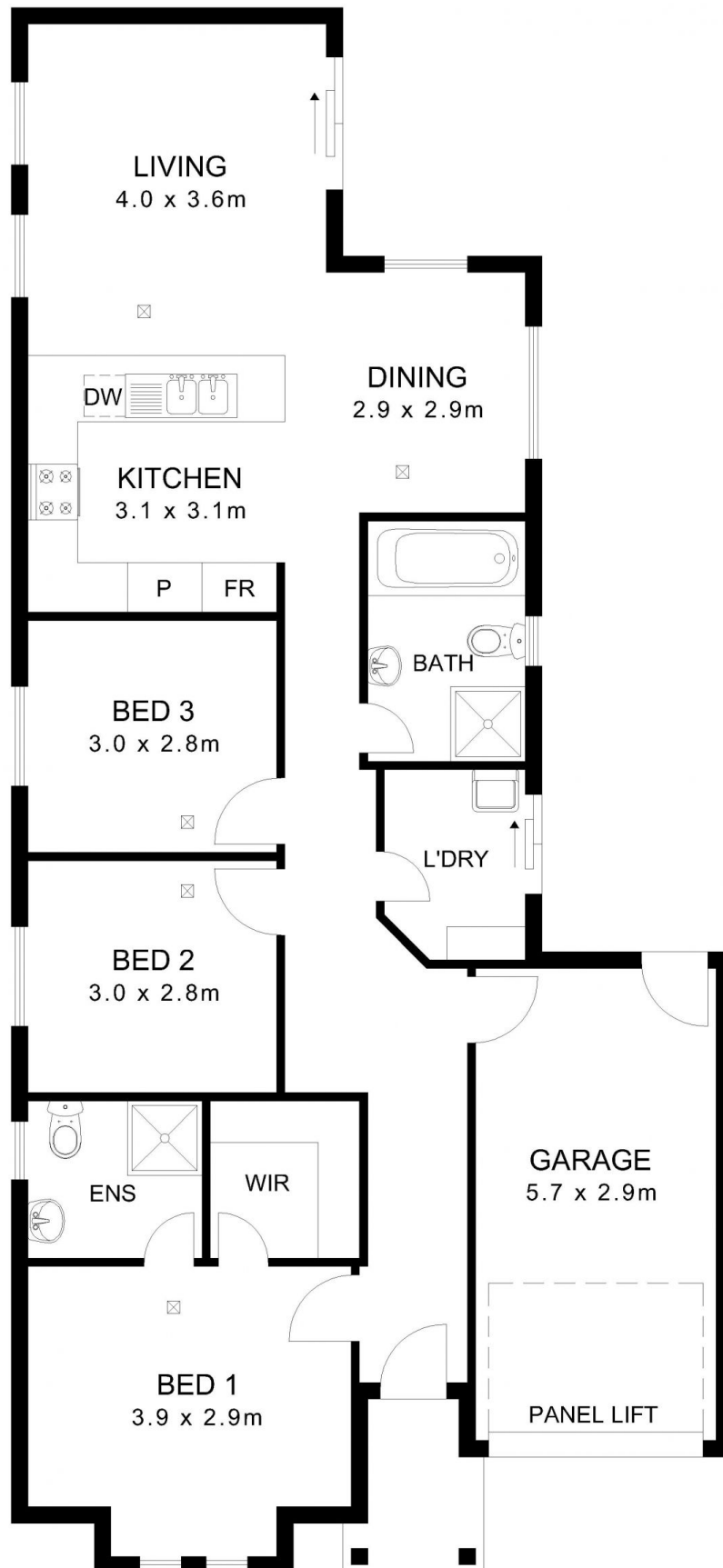
Price : \$ 265,000
Building Size : 119 sqm
Land Size : 290 sqm
View : <https://www.timmorris.com.au/6001840>



Anthony Fonovic
08 7225 2525



Tim Morris
08 7225 2525



95 WATTLEBIRD DRIVE BURTON

NOTE: While every effort has been made to verify the correct details in this brochure, neither the vendor, illustrator or agent accept liability for any error or omission. All parties are requested to take relevant action to satisfy themselves of any issues.

@ Copyright 2019 MAYMEDIA"