



## 64 Maple Avenue Royal Park SA

3 1 3

ALL OFFERS PRESENTED AS OWNER WANTS IT SOLD !!!

Great sized allotment of approximately 381m2 and ready for to renovate to your liking or start all over with a new build as many are doing in this popular suburb of Royal Park.

- Lounge room with wall unit air conditioner
- Bedrooms 2 & 3 bedroom with ceiling fan
- Eat in kitchen and electric cooking
- Large bathroom with separate bath and shower
- Massive Laundry and separate toilet
- Carpeted living and bedrooms
- Roller door with parking for 2 vehicles
- Shed with roller door for more parking

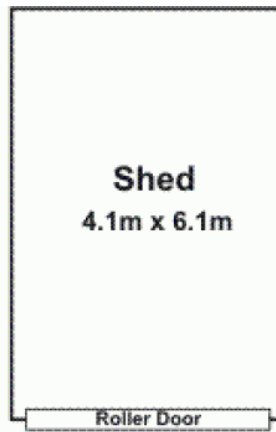
**Building Size** : 148 sqm

**Land Size** : 381 sqm

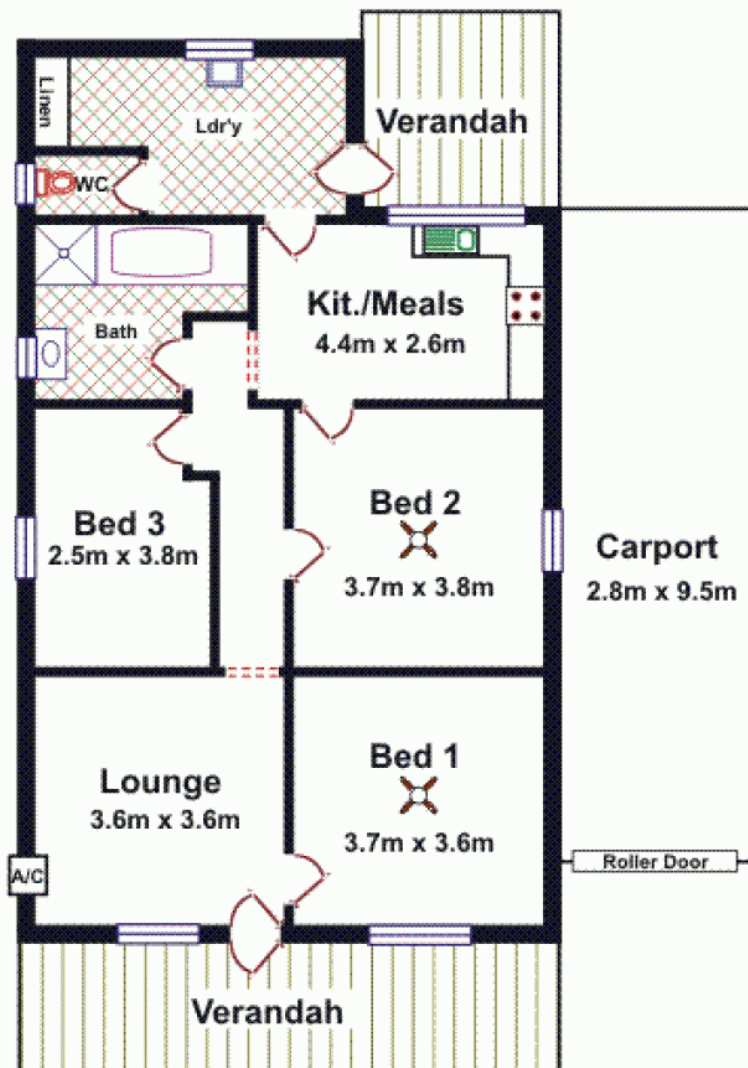
**View** : <https://www.timmorris.com.au/6001959>



**Tim Morris**  
08 7225 2525



Area	M <sup>2</sup>
Living	97.28
Carport	26.60
Verandah	24.36
<b>Total Approx</b>	<b>148.24</b>



**Please Note:** Every care has been taken to verify the correctness of the details in this plan. However, the plan is not a surveyed plan and the dimensions given are estimates only. No warranty or representation is given as to the correctness of the information provided and neither the owners nor the Agents can accept responsibility for any errors or omissions.