

**18 Whiteparish Road Elizabeth North SA**

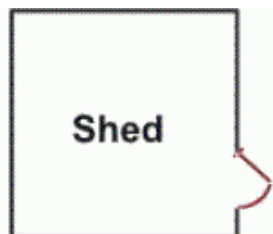
3 1 2

This property has been re roofed and sits on a large allotment of approximately 703 ms.

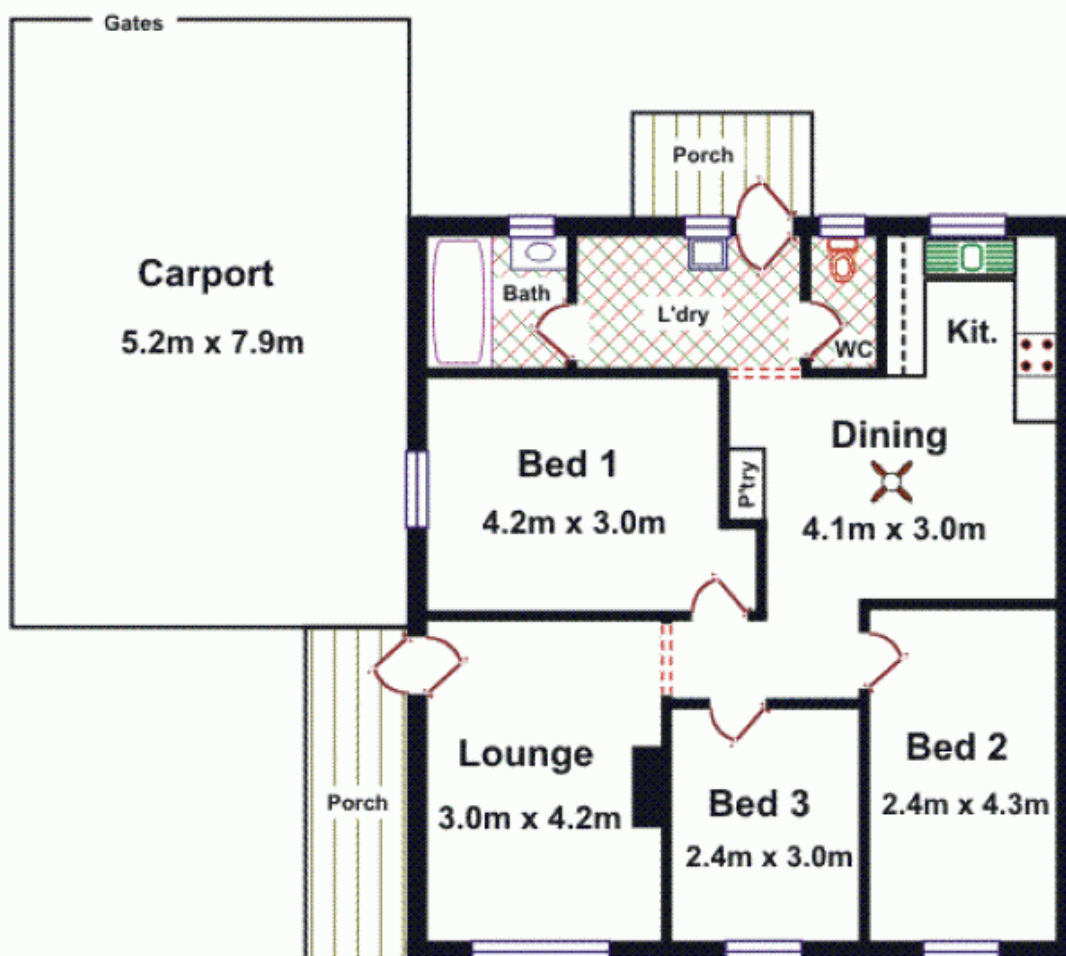
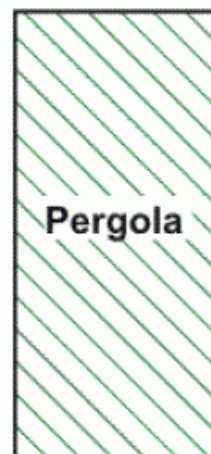
- 3 Bedroom
- 1 Bathroom
- Corner kitchen
- Separate Dining
- Separate bathroom and toilet
- Double car port

Currently tenanted on a periodical lease @ \$225.00 per week

**Land Size** : 703 sqm  
**View** : <https://www.timmorris.com.au/6001960>



Area	M <sup>2</sup>
Living	84.66
Carport	41.21
Porch	9.15
<b>Total Approx</b>	<b>135.02</b>



**Please Note:** Every care has been taken to verify the correctness of the areas and details used in this leaflet. No warranty or representation is given or made as to the correctness of the information supplied and neither the owners, illustrator nor the Agents can accept responsibility for errors or omissions. The sketch is for illustration purposes only and intending purchasers should satisfy themselves independently regarding sizes, layout and location of the property. Please check with local council that all structures are approved by council.