



1/175-177 Anzac Highway Kurralt Park SA

2  1  1 

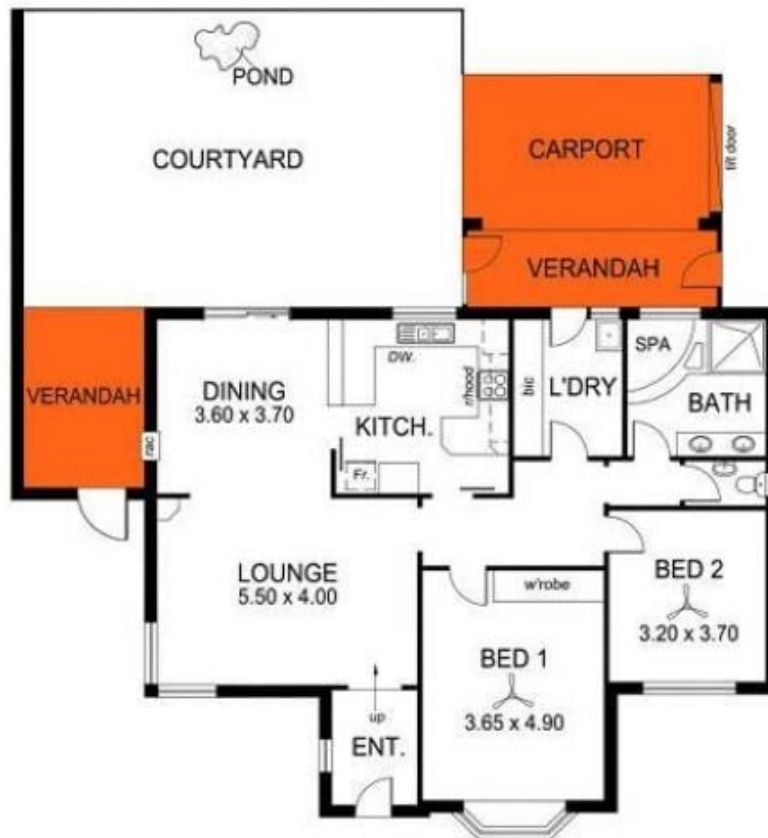
Perfectly placed between the City and the Bay, this gracious and spacious character home has inherited its classic good looks from a rich 1930s heritage. With no common walls the interior feels house-like in both styling and proportions. A fabulous and affordable alternative for semi or townhouse buyers. Enjoy the convenience of local shops and CBD bus transport.

View : <https://www.timmorris.com.au/6001961>

- * Generous living room adorned with classic features
- * Dining room extending off the living room conveniently set adjacent the kitchen
- * Two bedrooms, king-size master bedroom with window seat
- * Rich timber flooring, gorgeous period features, high patterned ceilings
- * Suited to small families, discerning downsizers or astute



Tim Morris
08 7225 2525



This drawing is for illustration purposes only.
 All measurements are approximate only and information
 intended to be relied upon should be independently verified.