

**30 Lovelock Street Highbury SA**

3  1  2 

Look no further with this large updated 60's home on a great sized block of some 682ms approx with a 19.23m frontage. Located within a short commute to the CBD, close to shopping, transport and amenities.

**View :** <https://www.timmorris.com.au/6001989>

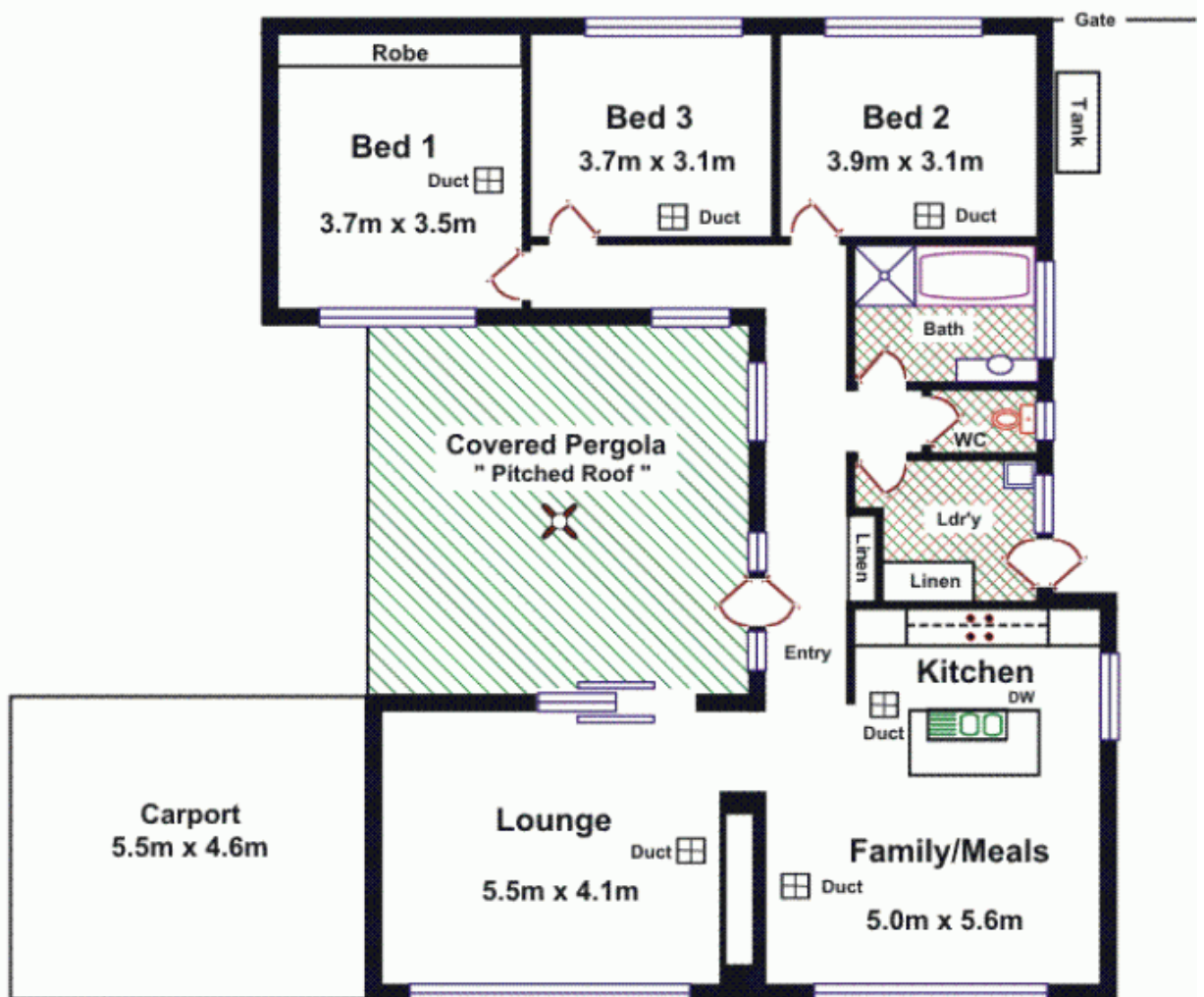
- Offering Extra Features
- Three bedrooms, master with BIR
- Massive living area
- Separate dining
- 2 year old white kitchen
- Stainless steel appliances
- Big living area with open entertaining
- Large bathroom with separate bath & shower
- Huge undercover entertaining area with ceiling fan and water mister
- Big rear yard
- Shedding



**Tim Morris**  
**08 7225 2525**

Shed

Area	M <sup>2</sup>
Living	138.76
Carport	25.76
<b>Total</b>	<b>164.52</b>



**Please Note:** Every care has been taken to verify the correctness of the areas and details used in this leaflet. No warranty or representation is given or made as to the correctness of the information supplied and neither the owners, illustrator nor the Agents can accept responsibility for errors or omissions. The sketch is for illustration purposes only and intending purchasers should satisfy themselves independently regarding sizes, layout and location of the property. Please check with local council that all structures are approved by council.