



5/194 Fullarton Road Dulwich SA

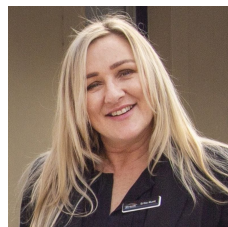
2 1 1

This group is set well back from Fullarton Road in an access road, actually fronting on to Tudor Street, and being double brick it is remarkably quiet and peaceful.

A fabulous location opposite beautiful Victoria Park with its bike and walking/exercise tracks. Walk across the park to vibrant Hutt Street or stroll to Dulwich village with its 7 day supermarket, medical rooms, coffee shops, bakeries, and excellent specialty shops.

Walk or take a quick bus trip to the City. This two bedroom unit is upstairs, private and secure with front & rear balcony. .

View : <https://www.timmorris.com.au/6003249>



Erika Munt
08 7225 2525



Tim Morris
08 7225 2525

2 great sized bedrooms