

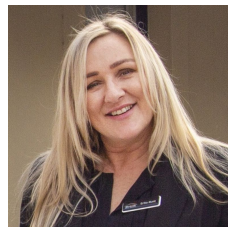


**48 McDonnell Avenue West Hindmarsh SA**

4 1 4

Features that make this home special;  
 4 good sized bedrooms  
 Formal lounge with timber mantle  
 Wide central passage  
 Country style kitchen and meals  
 Timeless bathroom and second W/C  
 Light-filled second living  
 Multiple shedding  
 Low maintenance yard  
 2 x Air conditioners

**Building Size** : 154 sqm  
**View** : <https://www.timmorris.com.au/6160767>

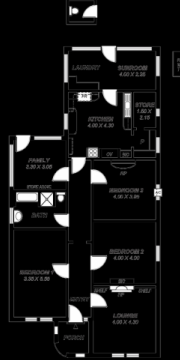
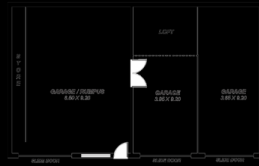


**Erika Munt**  
 08 7225 2525



**Tim Morris**  
 08 7225 2525

Superbly located near to facilities. 300m to the River Torrens Linear Park, sporting facilities and playground. Easy walk to the Hindmarsh Stadium and Entertainment Centre precinct. Short drive to multiple shopping centres,



This drawing is for illustrative purposes only.  
All measurements are approximate and should be verified  
by the client prior to construction.

Scale:  
1:100  
1:200  
1:500