



46 Blyth Street Clearview SA

5 2 4

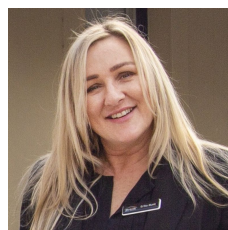
Situated a mere 15 minutes from the Adelaide CBD, this immaculately presented & feature-packed solid-brick family home.

In addition to the generous accommodation afforded by five bedrooms (or 4 + Study) & spacious separate living areas, the home features selected updates throughout, whilst "big ticket" items including the kitchen & bathrooms have been updated. The internal décor is predominantly neutral which in addition to its overall condition & presentation, radiates a particularly liveable charm that potentially could be yours to enjoy.

A summary of key highlights includes:

? Separate formal lounge & dining rooms (set away from

Building Size : 215 sqm
Land Size : 566 sqm
View : <https://www.timmorris.com.au/6393629>



Erika Munt
08 7225 2525



Tim Morris
08 7225 2525



This drawing is for illustration purposes only.
All measurements are approximate and details intended to be relied upon should be independently verified.

Area	m ²
Living	165.75
Verandah O/D	43.81
Carport	21.60
Shed	12.80
Porch	7.65
Total	251.61