



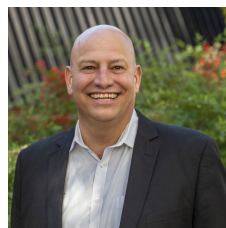
26A Whyte Street Peterhead SA

3 2 2

Anthony Fonovic & Tim Morris Real Estate are proud to present this immaculate 3-bedroom home perfect for the 1st homebuyer looking to get their foot in the property market, investor looking to increase their investment portfolio with an excellent yielder, or the downsizer who likes their weekends & looking for the easy care no-fuss lifestyle.

This beautiful home offering a large open plan living area boasts a well-appointed kitchen with stylish splashbacks, quality cabinetry featuring ample storage & stainless-steel appliances including Fisher & Paykel dishwasher, induction cooktop & electric oven. The kitchen overlooks the light-filled dining & casual living area with vaulted ceilings that leads out to the generous size easy maintenance courtyard through glass sliding doors to the alfresco area

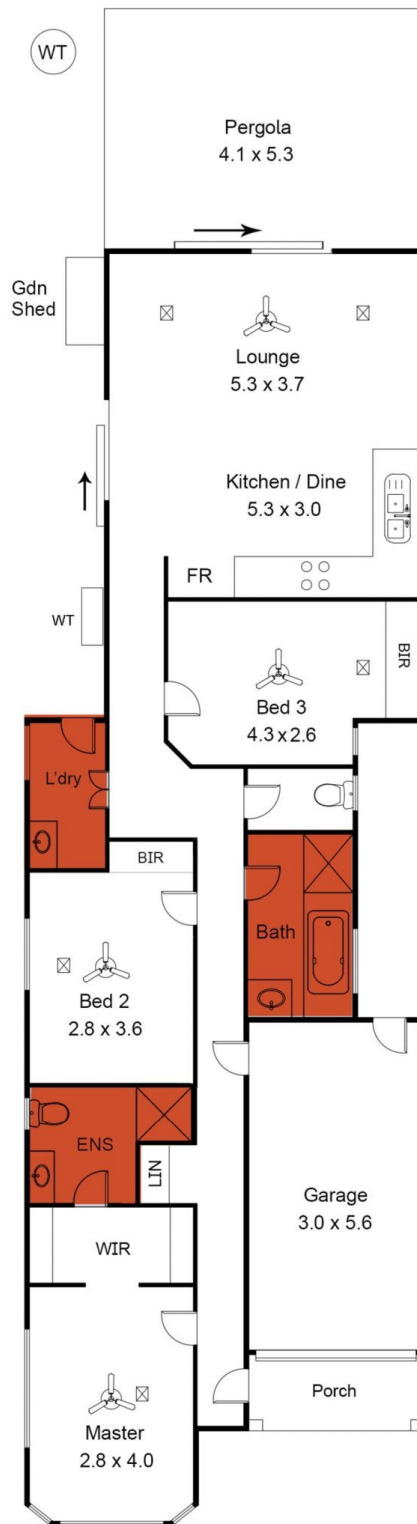
Price : \$ 645,000
Building Size : 130 sqm
Land Size : 248 sqm
View : <https://www.timmorris.com.au/7181298>



Anthony Fonovic
08 7225 2525



Shiv Arora
08 7225 2525



tim morris
REAL ESTATE

26A Whyte Street, Peterhead

This drawing is for illustration purposes only.
All measurements are approximate and details intended to be relied upon should be independently verified. Leading Lines Photography.