



92 Bridge Road Pooraka SA

3  1  2 

This superb home is located close to Ingle Farm shopping and Mawson Lakes Village and is a must to see!

View : <https://www.timmorris.com.au/7798042>

- * Security shutters on all front windows
- * Alarm System
- * Spacious living room with polished floorboards & large light windows
- * reverse cycle air conditioning.
- * 3 good size bedrooms with built in robes in main and 2nd bedroom
- * Updated kitchen comes with large gas stove & dishwasher
- * Stunning large timber decking overlooking the large rear yard
- * Garage plus undercover car parking
- * Pets are negotiable

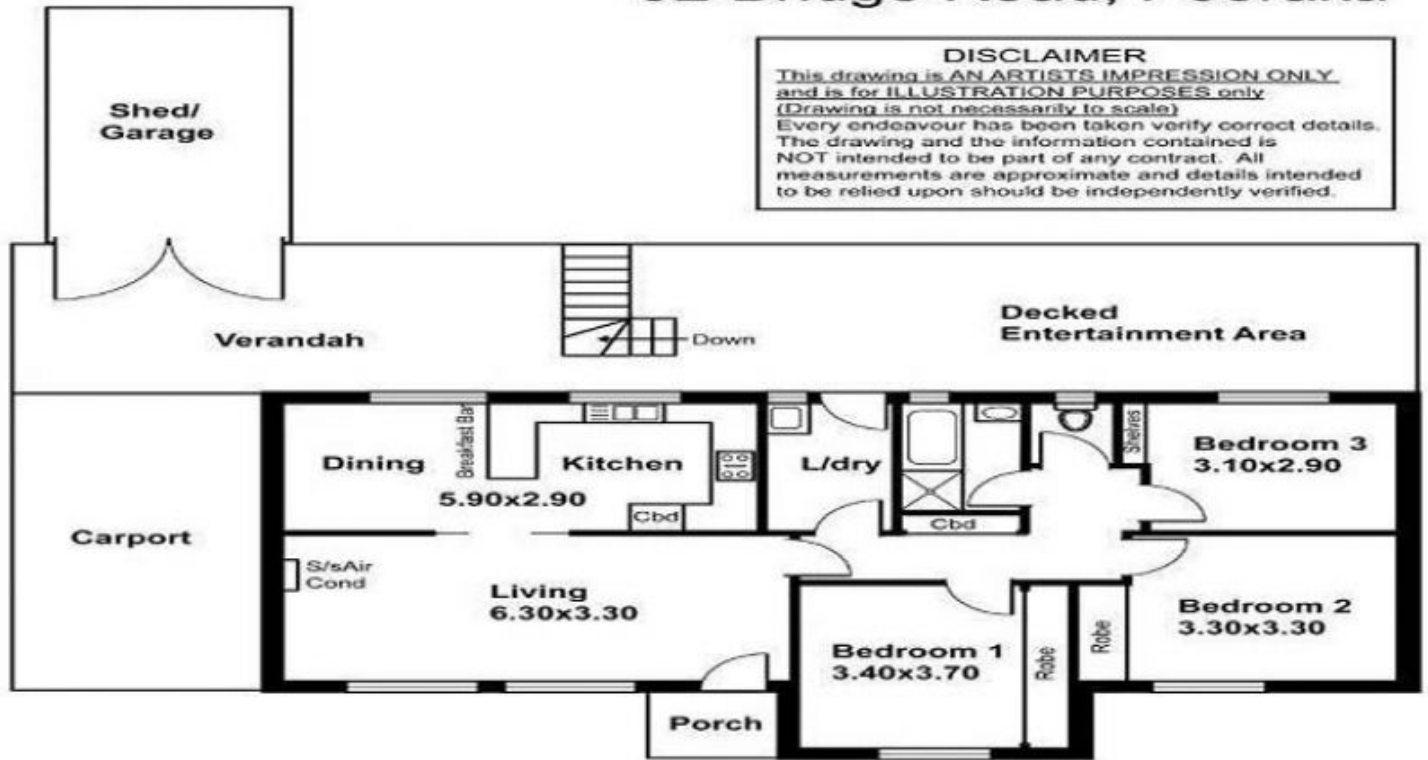


Tony Press
0420561600



Tim Morris
08 7225 2525

92 Bridge Road, Pooraka



DISCLAIMER
 This drawing is AN ARTISTS IMPRESSION ONLY, and is for ILLUSTRATION PURPOSES only (Drawing is not necessarily to scale). Every endeavour has been taken to verify correct details. The drawing and the information contained is NOT intended to be part of any contract. All measurements are approximate and details intended to be relied upon should be independently verified.

Should you find this property interesting may we recommend you register your interest by leaving your name and contact telephone number with the Sales Consultant. We would be pleased to make every endeavour to contact you if the property is to be sold.

TOTAL AREA: (Estimate Only)	101.78 m squ / 10.94 sqs Living Area Only
---------------------------------------	--

Sep 16

Desk Top Image - (Y0916-M73)

www.rpdata.com