



4/108a Woodville Road Woodville SA

2 2 3

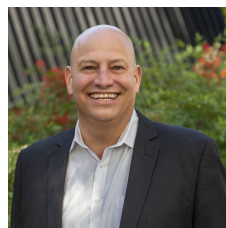
Forget the usual Woodville Road assumptions ? this one flips the script. Step inside and you're met with a calm, whisper-quiet retreat that feels worlds away from the outside world. Even in peak rush hour, the noise stays out and the comfort stays in, giving you the lifestyle edge buyers hunt for but rarely find at this price point.

The real headline act? Parking. Not one, not two ? but room for three to four cars, making this an absolute unicorn in the unit market. Whether you've got multiple vehicles, toys, visitors, or a home business on the go, this setup punches way above its weight.

And then there's the location ? ridiculously convenient and

[For full version visit the website](https://www.timmorris.com.au)

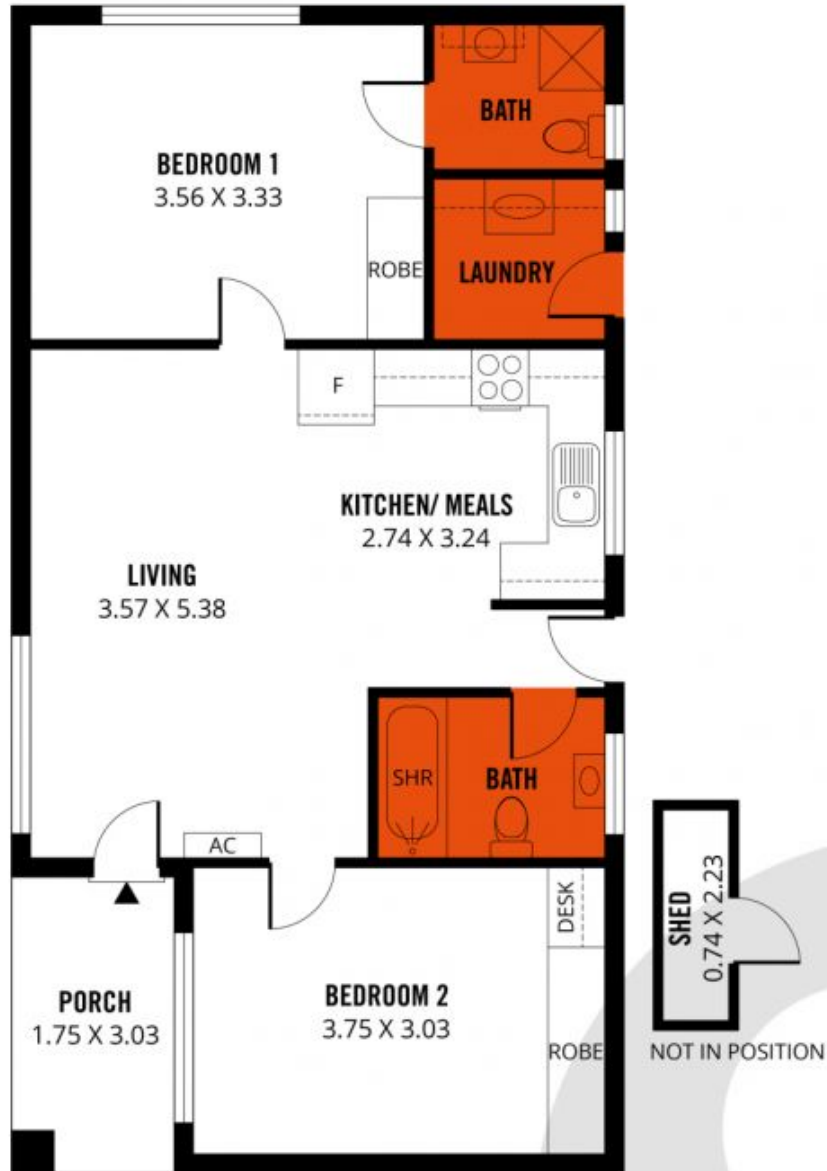
**Type** : Unit  
**Price** : \$ 607,500  
**Land Size** : 217 sqm  
**View** : <https://www.timmorris.com.au/8543605>



**Anthony Fonovic**  
08 7225 2525



**Tim Morris**  
08 7225 2525



81m<sup>2</sup>

TOTAL

74m<sup>2</sup>

Living

2m<sup>2</sup>

Shed

5m<sup>2</sup>

Porch



Scale in metres. This drawing is for illustration purposes only. All measurements are approximate and details intended to be relied upon should be independently verified.

Produced by The Fotobase Group